

常套文句

じょう
そう

ぶん
く

イン
ス
ト
ラ
ク
タ

ペツ
カー



MAMBO (Cuba)

Clave

Musical notation for Clave in 2/4 time, showing a 3-2 pattern over two measures.

Timbales

Musical notation for Timbales in 2/4 time, showing a steady eighth-note pattern for both Left and Right hands.

Bongo

H=親指 T=指先 ♩ =そのまま手を置いておく

Musical notation for Bongo in 2/4 time, showing a complex rhythmic pattern for Left and Right hands with fingerings H and T.

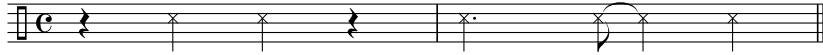
Conga

↑=Slap H=手の平 T=指先 ♩ =そのまま手を置いておく

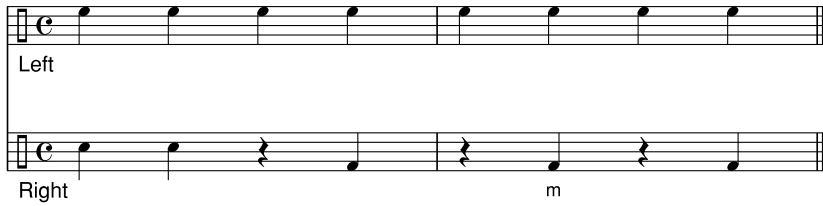
Musical notation for Conga in 2/4 time, showing a rhythmic pattern for Left and Right hands with slaps and fingerings H and T.

CHA-CHA-CHA (Cuba)

Clave



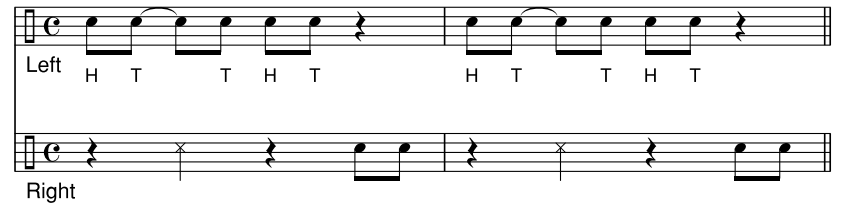
Timbales m=手で押さえるミュート



Guiro ∨=短いDownと長いUp ∖=Down / =Up



Conga ↑=Slap H=手の平 T=指先 ♯ =そのまま手を置いておく



DANZON (Cuba)

Clave

Timbales

m=手で押さえるミュート O=Open

Guiro

Conga

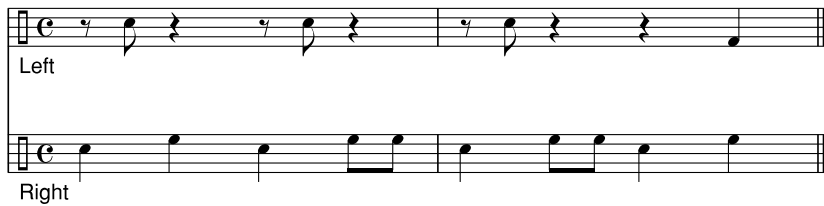
↑=Slap H=手の平 T=指先 ↱↲=そのまま手を置いておく

SON (Cuba)

Clave



Timbales



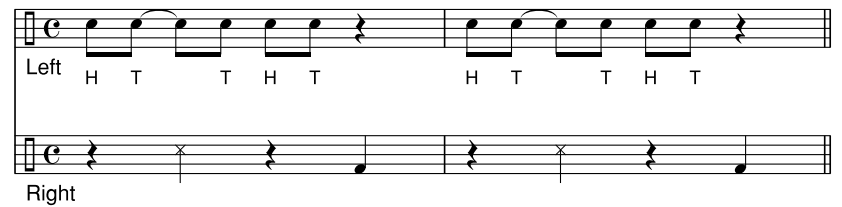
Guiro

✓ =短いDownと長いUp
 \ =Down / =Up



Conga

† =Slap H=手の平 T=指先 ◡ =そのまま手を置いておく



SONGO (Cuba)

Clave

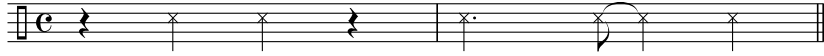
Guiro \ =Down / =Up

Timbales 第4間=Wood Block 第1間=Timbales Low

Conga ↑ =Slap O=Open H=手の平 T=指先 ◡ ◢ =そのまま手を置いておく

MOZAMBIQUE (Cuba)

Clave



Cowbell



Timbales



Left



Right

Conga H=手の平 T=指先



Left

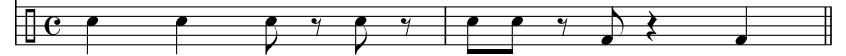


Right

H T



Left



Right

H T

BOLERO (Cuba)

Timbales Paila=Timbalesの胴をPlay

Left

Right

Bongo adlib †=Slap H=親指 T=指先 ◡ =そのまま手を置いておく

Left

Right

Conga †=Slap O=Open H=手の平 T=手の先 C=左手全体でCongaセンターをPlay ◡ =そのまま手を置いておく

Left

Right

MERENGUE (Santo Domingo)

Guira \ =Down / =Up

Musical notation for Guira in 4/4 time. The notation consists of a single staff with a treble clef and a common time signature. The melody is composed of eighth and quarter notes. Slashes below the notes indicate the direction of the guira strokes: backslashes (\) for down strokes and slashes (/) for up strokes. The sequence of strokes is: down, up, down, up, down, up, down, up, down, up, down, up, down, up, down, up.

Conga with Cowbell beater

↑ = CongaのエッジをPlay O=Open S=Slap

Musical notation for Conga with Cowbell beater in 4/4 time. It features two staves: Left and Right. The Left staff uses a treble clef and contains notes with stems pointing up or down, and rests. The Right staff uses a bass clef and contains notes with stems pointing up or down, and rests. The notation includes various symbols for Conga techniques: an upward-pointing arrow (↑) for playing the edge, 'O' for Open, and 'S' for Slap. The sequence of techniques is: Left (O, S, S, O, O), Right (S, S, O, O, S, O).

Conga ↑ =Slap O=Open T=指先 ↷ =そのまま手を置いておく

Musical notation for Conga in 4/4 time. It features two staves: Left and Right. The Left staff uses a treble clef and contains notes with stems pointing up or down, and rests. The Right staff uses a bass clef and contains notes with stems pointing up or down, and rests. The notation includes various symbols for Conga techniques: an upward-pointing arrow (↑) for Slap, 'O' for Open, 'T' for Finger tip (指先), and a curved arrow (↷) for leaving the hand as is. The sequence of techniques is: Left (T, T, O, T, T), Right (S, S, O, O, S, O).

BOMBA (Puerto Rico)

Timbales

O=Timbales Low Open

Left

Right

Left

Right

Conga

C=CongaのセンターをPlay O=Open

Left

Right

Left

Right

PLENA (Puerto Rico)

Clave

Conga

↑=Slap O=Open

Left

S

O

S

S

O

Right

O

O

O

Timbales

o=Timbales Low open

m=Timbales Lowをスティックでmute

Left

o

m

o

m

Right

REGGAETON (Puerto Rico)

Timbales


Left

Right

The Timbales part consists of two staves. The top staff is labeled 'Left' and the bottom staff is labeled 'Right'. Both are in 4/4 time. The left hand plays a rhythmic pattern of eighth notes and quarter notes, while the right hand plays a simpler pattern of quarter notes.

Cowbell

The Cowbell part is a single staff in 4/4 time, featuring a rhythmic pattern of quarter notes and eighth notes.

O=Open S=Slap H=手の平 T=指先
 C=CongaのセンターをPlay  =そのまま手を置いておく

Conga

Left

Right

The Conga part consists of two staves. The top staff is labeled 'Left' and the bottom staff is labeled 'Right'. Both are in 4/4 time. The notation includes letters (C, O, H, T, S) and symbols (the triangle symbol) placed below the notes to indicate specific playing techniques.

GUAGUANCO=RUMBA (Cuba)

Clave

Musical notation for Clave rhythm in 2/4 time. The first staff shows a dotted quarter note followed by an eighth note, then a quarter note with a slur over it. The second staff shows a quarter note, an eighth note, and a quarter note with a slur over it.

Segunda

O=Open H=手の平 T=指先

Musical notation for Segunda in 2/4 time. The left hand part consists of eighth notes with slurs. The right hand part consists of quarter notes with slurs. The notation is split into two staves.

Left T H T H T H T H

Right H T H T O T H T

Tumbadora

B=手の平でヘッドの真ん中をPlay
O=Open H=手の平 T=指先

Musical notation for Tumbadora in 2/4 time. The left hand part consists of eighth notes with slurs. The right hand part consists of quarter notes with slurs. The notation is split into two staves.

Left H T T H T T

Right O T B O T B O

YAMBU=RUMBA (Cuba)

Clave

Tumbadora

B=手の平でヘッドの真ん中をPlay
O=Open H=手の平 T=指先

Segunda

O=Open H=手の平 T=指先

RUMBA COLUMBIA=RUMBA (Cuba)

Clave

Segunda

O=Open H=手の平 T=指先

Tumbadora

O=Open H=手の平 T=指先

ABAKUA (Cuba)

Clave

Musical notation for Clave in 12/8 time, showing a sequence of eighth notes and rests.

Tumbadora O=Open T=指先

Musical notation for Tumbadora in 12/8 time, showing patterns for Left and Right hands with 'T' and 'O' markings.

Segunda ↑=Slap O=Open H=手の平

Musical notation for Segunda in 12/8 time, showing patterns for Left and Right hands with 'H', 'O', and 'S' markings.

RittorMusic

***ベッカー／ラテン・パーカッションの常套句**

※譜例集の別売はしておりません。大切に保管してください。

All Words & Music by ベッカー、木村“キムチ”誠、ファン・カルロス、高橋ゲタ夫、森村 誠
浄書／DTP：有限会社ハンズ・エム
企画制作：株式会社リットーミュージック
無断複製・転載を禁じる。